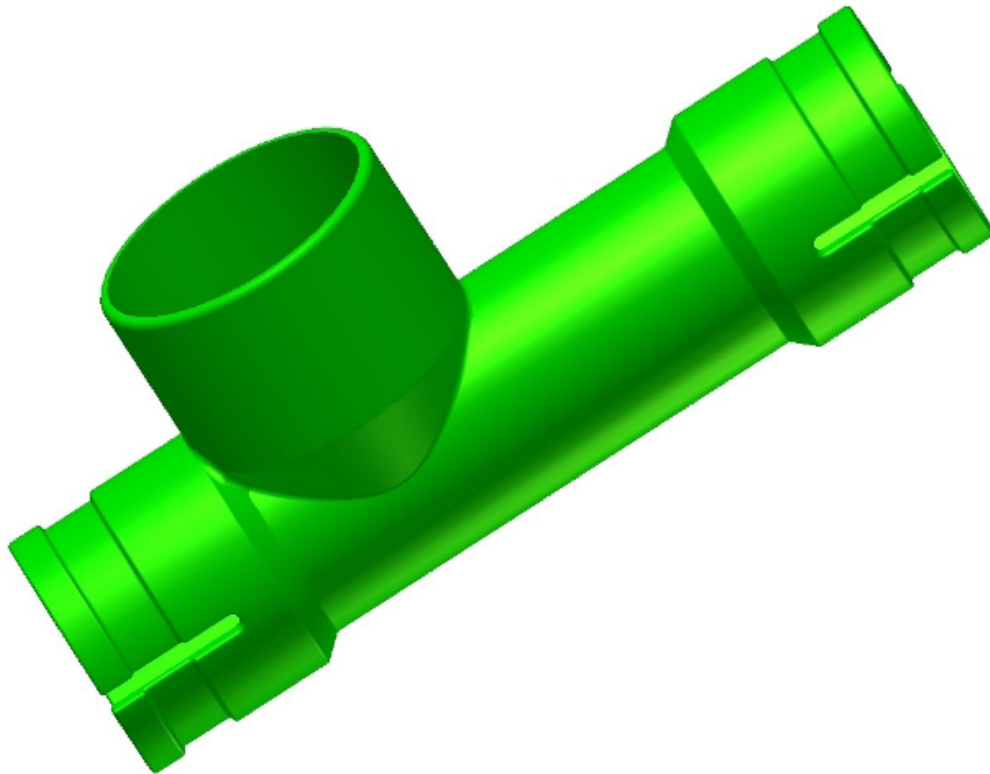


Broschüren

Slow feeding - Biofix
B-1029-DE



Slow feeding

- Secure the sows remain calm during feeding.
- No fights and stress.
- More live born piglets.
- No waste of feed, because the speed is adapted to the sow eating absorption.
- The system is reliable with large capacity.
- Low investment.

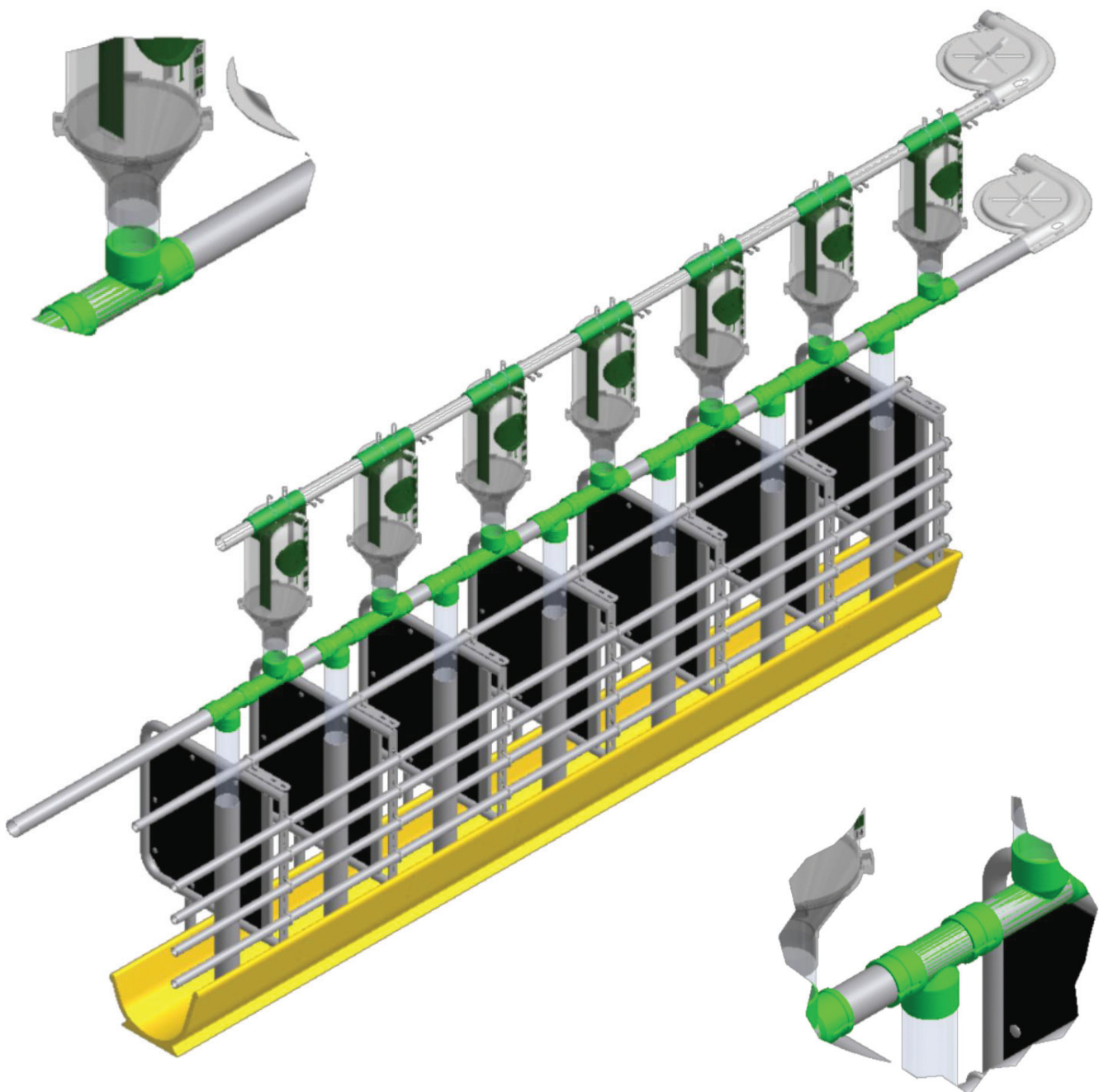
Danish Design
German Quality
Global Experience



ACO FUNKI

Flow description

1. The top filling dryfeeding system fills the volume dispenser, at a desired time. The volume dispenser can be adjusted to the right amount of feed during gestation.
2. When the volume dispensers are filled, then starts the bottom dry feeding system. This dryfeeding system runs with a slow speed, thereby the feed falls down to the sows with approx. 150-200 grams per minute. This keeps sows on their eating place until they has eaten the total feed ration.



B-1029-DE